



148 Walton Street

SW3 2JZ

SHOP TO LET

£60,000 pa

506 sq ft / 47 sq m



FLOOR AREA 506 sq ft / 47 sq m

LEASE An assignment of the existing full repairing & insuring lease for a term expiring 31st August 2030. The lease incorporates an upward only rent review 1st September 2025.

RENT £60,000 per annum exclusive

BUSINESS RATES Rateable Value £41,000
Rates Payable £20,459

LEGAL COSTS Each party to be responsible for their own legal costs

EPC An Energy Performance Certificate is available upon request

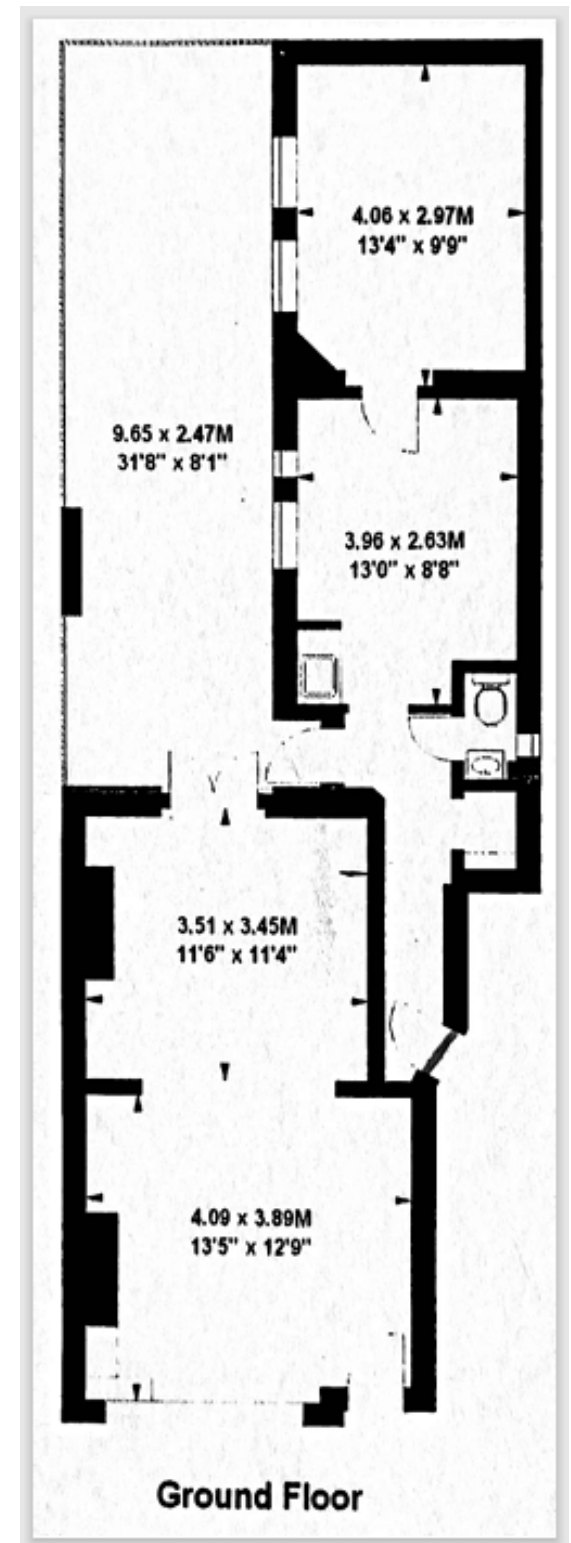
VIEWING Strictly by appointment through sole agents Ovington Property

148 Walton Street SW3



The premises are prominently situated at the southern end of Walton Street, close to Brompton Cross. Local retailers include Chanel, Joseph, Katherine Pooley, James Perse, Robert Clergerie, Andrew Martin, Isabel Marant, Golden Goose, Jaks & Zefi.

148 Walton Street SW3



The shop is open plan with two office or storage areas to the rear that have access to a paved garden.



Contact Us



David Hodges

07767 840 857

david@ovingtonproperty.com



Oliver Dodd

07789 278 915

oliver@ovingtonproperty.com



020 7589 5221



50 Beauchamp Place
Knightsbridge, London
SW3 1NY



ovingtonproperty.com

These particulars are for general guidance only. Sizes dimensions descriptions and costs shown are approximate.

Floorplan for guidance only, not to scale or valuation purposes.

It must not be relied upon as a statement of fact. All measurements and areas are approximate.