

Floors 1-3

39

THURLOE PLACE

SOUTH KENSINGTON
LONDON SW7 2HP

No.39 Thurloe Place



Now available

Flexible
Office space
to rent

In the
heart of
South
Kensington

No.39 Thurloe Place

Office space



Communal stairs



Bathroom



Flexible open plan spaces



Three self
contained units

Spread over
three beautifully
refurbished, light
filled floors

Available as a whole
or individually

Spaces suitable for a
variety of uses

Health and beauty,
traditional business,
gallery space, and the
creative sector

Find your fit

FLOOR AREAS AND RENT

| | | |
|--------------|--------------------------------|-------------------|
| First Floor | 455 sqft / 42.27 sqm | £25,000 pa |
| Second Floor | 430 sqft / 39.95 sqm | £20,000 pa |
| Third Floor | 471 sqft / 43.76 sqm | £20,000 pa |
| TOTAL | 1,356 sqft / 125.98 sqm | £65,000 pa |

NB Rents are exclusive of business rates and service charge

LEASE

New lease for a term by arrangement

BUSINESS RATES*

| | | |
|--------------|------------------------------|-----------------------------|
| First Floor | Ratable Value £25,500 | Rates Payable £9,300 |
| Second Floor | Ratable Value £24,250 | Rates Payable £8,776 |
| Third Floor | Ratable Value £24,250 | Rates Payable £8,776 |

LEGAL COSTS

Each party to be responsible for their own legal costs

EPC

Energy Performance Certificates are available upon request

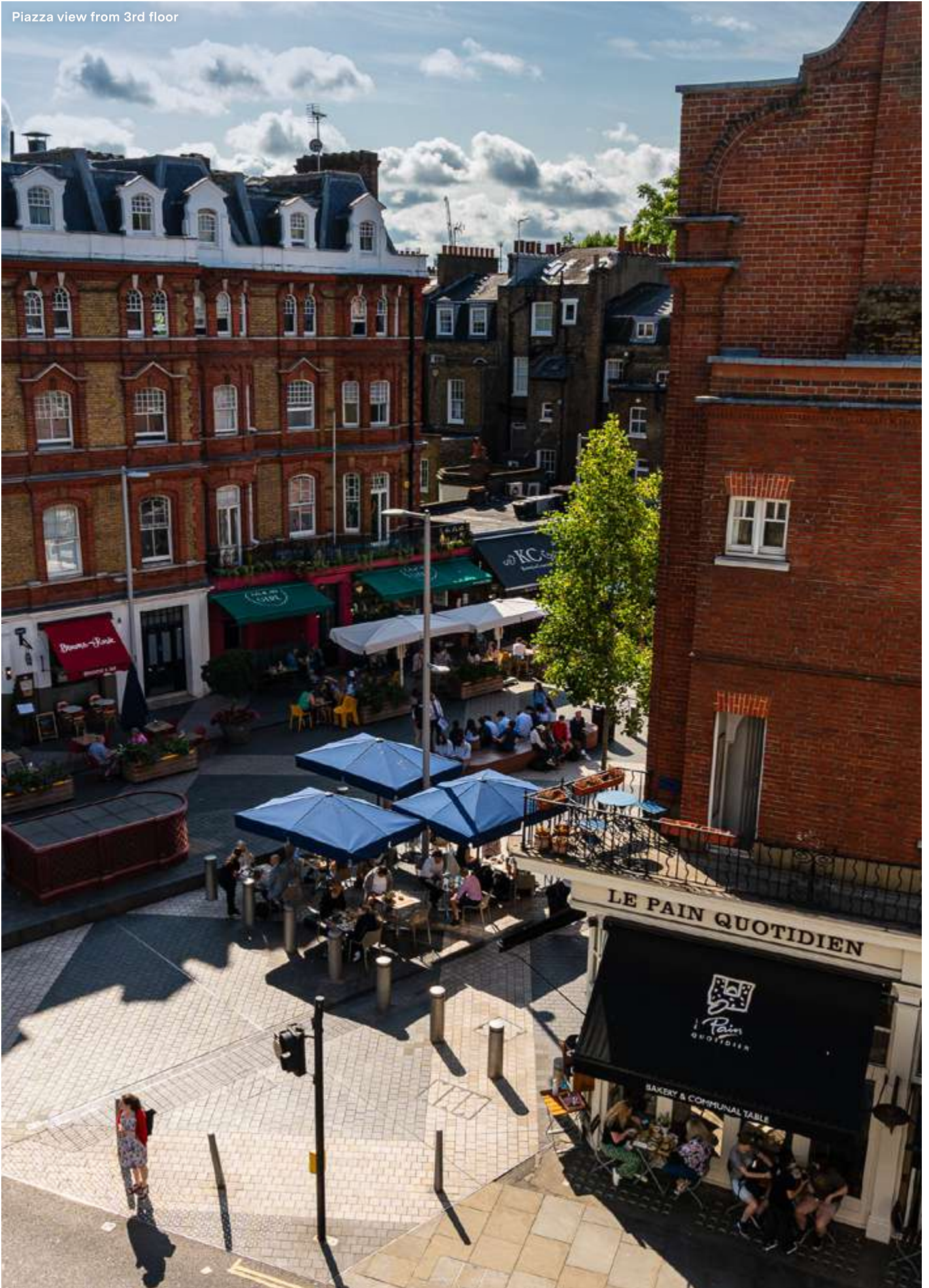
VIEWING

Strictly by appointment with sole agents Ovington Property

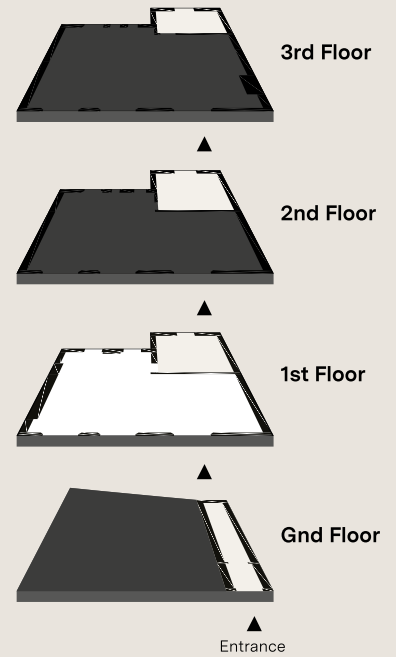
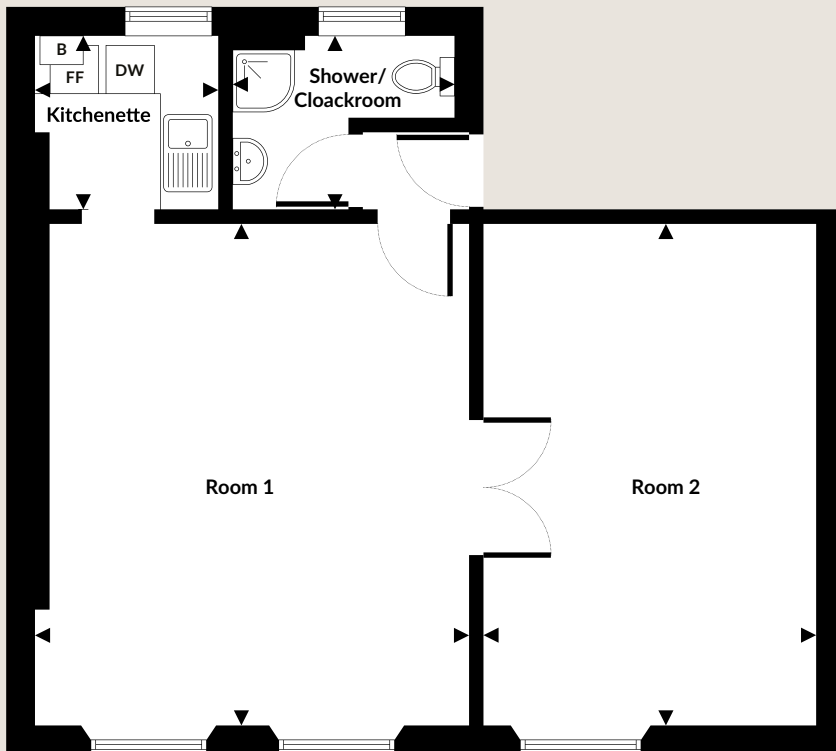
*Rates Payable 2023-2024

No.39 Thurloe Place

Piazza view from 3rd floor



First floor



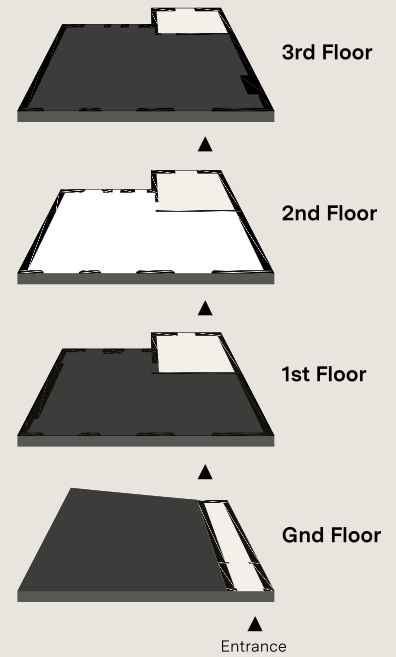
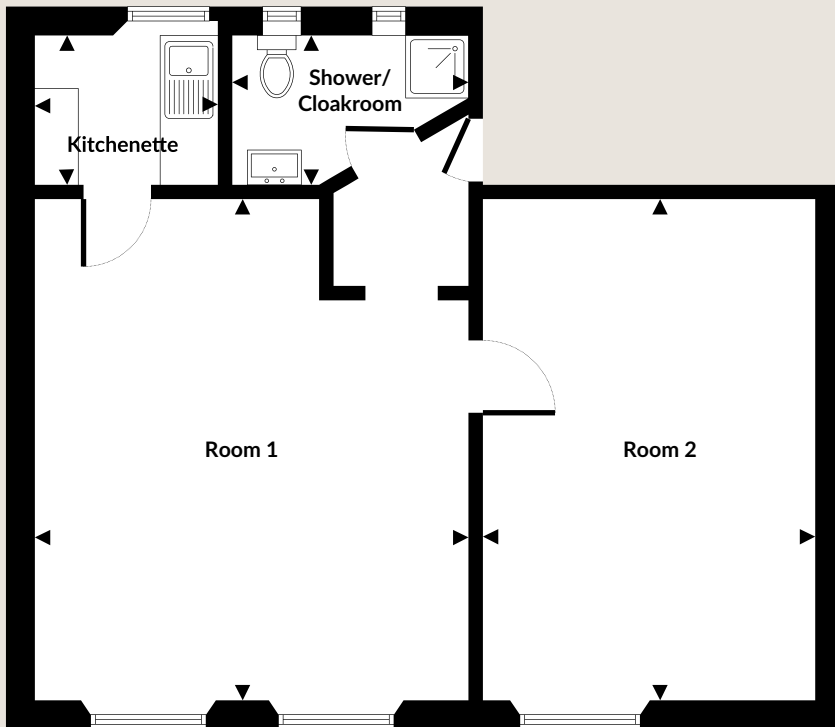
| Dimensions | m | ft |
|-------------------|-------------|----------------|
| Room 1 | 5.18 x 4.52 | 17'0" x 14'10" |
| Room 2 | 5.18 x 3.40 | 17'0" x 11'2" |
| Kitchenette | 1.98 x 1.80 | 6'6" x 5'11" |
| Shower/Cloakroom | 2.44 x 1.80 | 8'0" x 5'11" |
| Net Internal Area | 42.27 sqm | 455 sqft |

Floorplan Key

- B Boiler
- FF Fridge/freezer
- DW Dishwasher

Disclaimer: Please refer to back page for details

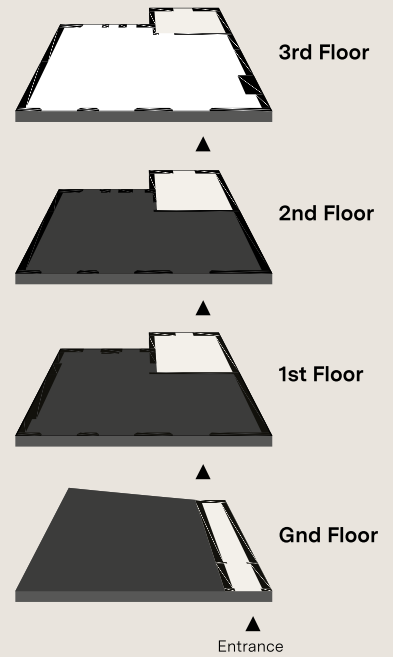
Second floor



| Dimensions | m | ft |
|-------------------|-------------|---------------|
| Room 1 | 5.33 x 4.42 | 17'6" x 14'6" |
| Room 2 | 5.23 x 3.45 | 17'2" x 11'4" |
| Kitchenette | 1.98 x 1.57 | 6'6" x 5'2" |
| Shower/Cloakroom | 2.13 x 1.60 | 7'0" x 5'3" |
| Net Internal Area | 39.95 sqm | 430 sqft |

Disclaimer: Please refer to back page for details

Third floor



| Dimensions | m | ft |
|-------------------|-------------|---------------|
| Room 1 | 4.42 x 4.19 | 14'6" x 13'9" |
| Room 2 | 5.18 x 3.48 | 17'0" x 11'5" |
| Kitchenette | 2.87 x 2.01 | 9'5" x 6'7" |
| Shower/Cloakroom | 2.51 x 1.63 | 8'3" x 5'4" |
| Net Internal Area | 43.76 sqm | 471 sqft |

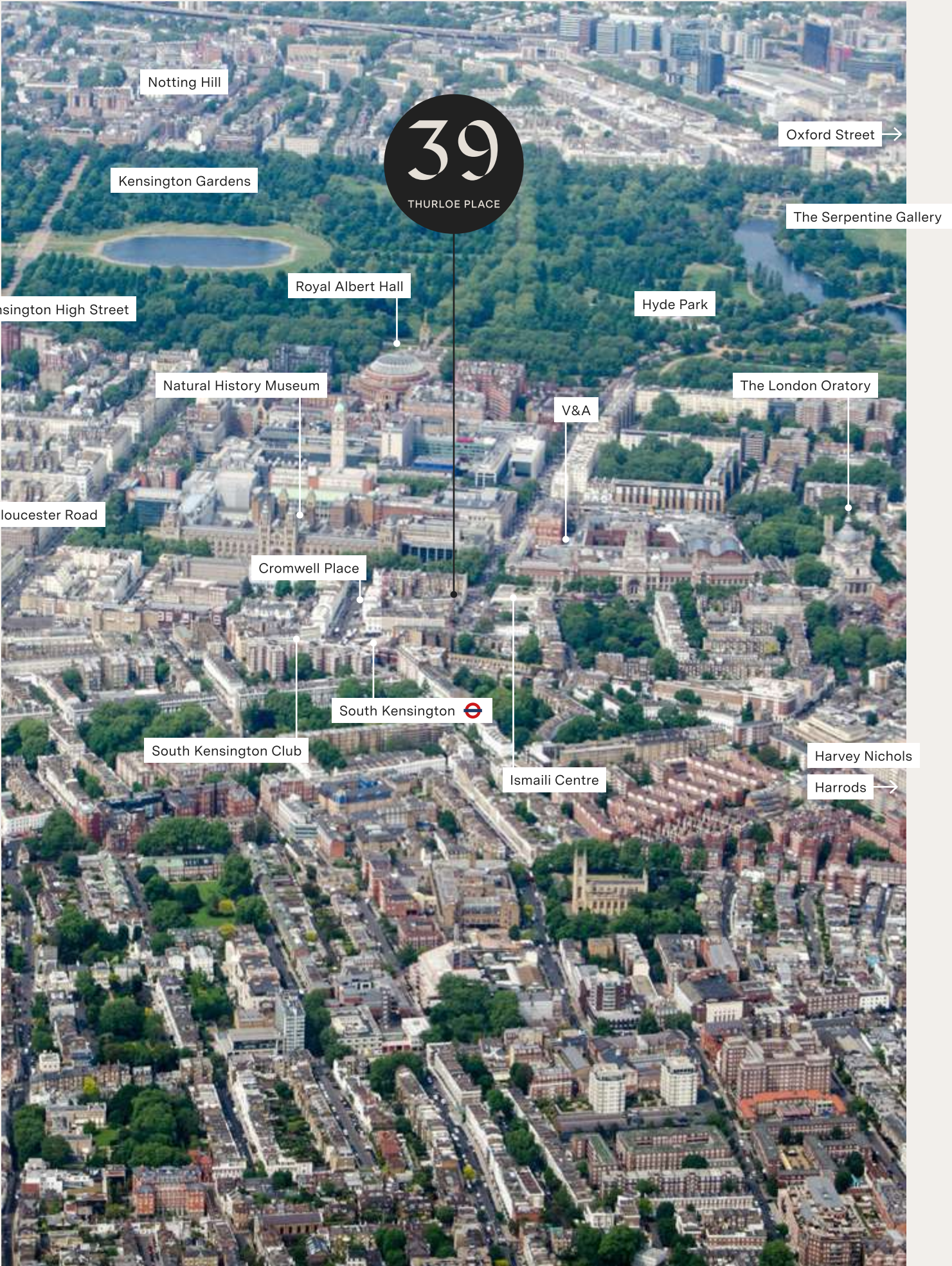
Disclaimer: Please refer to back page for details

PERFECTLY PLACED

SET IN ONE OF LONDON'S MOST CULTURALLY RICH NEIGHBOURHOODS, THURLOE PLACE POSITIONS YOU WITHIN 45 MINUTES OF HEATHROW, 20 MINUTES OF THE CITY AND AS LITTLE AS 15 MINUTES FROM THE WEST END

Just a two minute walk from South Kensington tube station, the Piccadilly, Circle and District Lines provide superb connections across the capital - from Camden and Islington to the North, the fashionable areas of East London and the green spaces of Kew Gardens, Richmond and Wimbledon lying to the South.

No.39 Thurloe Place



BE INSPIRED

WITH MUSEUMS AND GALLERIES AROUND EVERY CORNER,
HARRODS AND THE BOUTIQUES OF KNIGHTSBRIDGE WITHIN
A SHORT STROLL, AND A BUZZING FOOD SCENE RIGHT ON
YOUR DOORSTEP

39 Thurloe Place is ideally located for your business
and employees to thrive - graced by the open green spaces
of Kensington Gardens and Hyde Park, and supported
by a wide range of amenities to enhance
health and wellbeing.

No.39 Thurloe Place

Harrods



Cromwell Place



Launceston Place



Hyde Park



Natural History Museum



Big Fernand



South Kensington Club



No.39 Thurloe Place

CONTACT

OVINGTON PROPERTY

Oliver Dodd

oliver@ovingtonproperty.com

M. 07789 278 915

David Hodges

david@ovingtonproperty.com

M. 07767 840 857

—

info@ovingtonproperty.com

T. 020 7589 5221

50 Beauchamp Place

Knightsbridge

London SW3 1NY



Note: Floorplans are not to scale and are indicative only. Location of windows, doors, kitchen units, appliance spaces and fittings may differ. Doors may swing in the opposite direction to those shown. Windows may open differently or be fixed. All measurements are intended to give a general indication of the layout of individual spaces. Measurements shown are maximum room measurements. Total areas shown are maximum and may vary for each space. All dimensions are quoted in conformity with RICS (GIA EIFA) code of measuring practice (6th edition).