

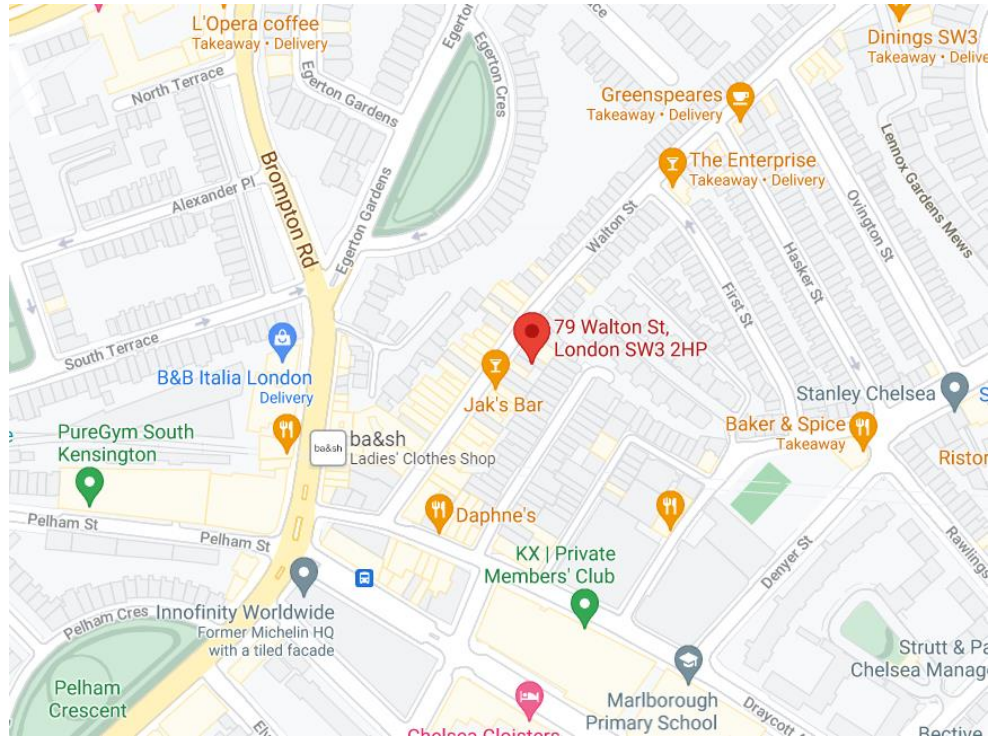
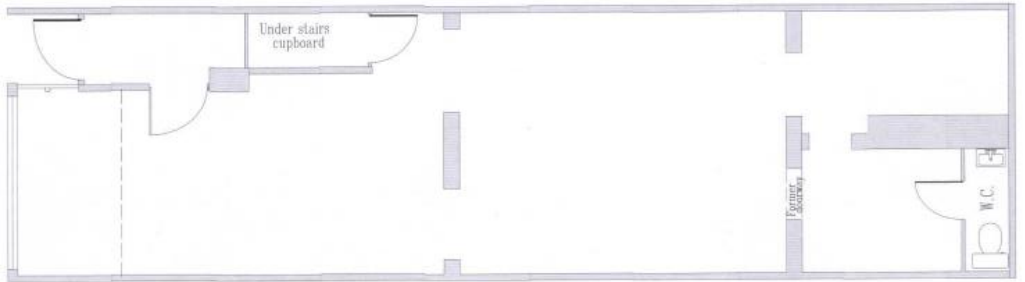
# 79 Walton Street SW3

611 Sq ft / 56.77 sq m

Location	The premises are prominently situated at the southern end of Walton St, close to the area commonly known as Brompton Cross. Local retailers include Chanel, Joseph, Katharine Pooley, James Perse, Robert Clergerie, Isabel Marant, Jaks & Zefi
Floor Area	Ground Floor - 611 sq ft /56.77 sq m
Lease	A new lease for a term by arrangement
Use	Class 'E' Use
Rent	£67,500 per annum exclusive. No VAT is payable on the rent
Business Rates	Ratable Value                   £40,250
	Rates Payable                   £20,608 (2021–2022)
Legal Costs	Each party to be responsible for their own legal costs
Viewing	Strictly by appointment though sole agents Ovington Property
EPC	An Energy Performance Certificate is available upon request



SHOP TO LET



Oliver Dodd  
07789278915  
[oliver@ovingtonproperty.com](mailto:oliver@ovingtonproperty.com)

David Hodges  
07767840857  
[david@ovingtonproperty.com](mailto:david@ovingtonproperty.com)

50 Beauchamp Place  
Knightsbridge  
London SW3 1NY

These particulars are for general guidance only. Sizes dimensions descriptions and costs shown are approximate. Floorplan for guidance only, not to scale or valuation purposes. It must not be relied upon as a statement of fact. All measurements and areas are approximate.